



## **BNI Chapter Leadership Team:**

These signs that communicate meeting risks and safety precautions are to be printed and displayed at the BNI Chapter Meeting's Registration Table to be seen by every attendee of the meeting during the Traditional Meeting Relaunch environment.

Without these signs properly displayed and readable by every attendee to the meeting, the chapter will be asked to resume Zoom only Chapter Meetings. In BNI, safety is our number one priority to all our members and their guests. We have set and will maintain the "Gold Standard" in safety and care for all involved.

Remember that each Chapter member has been asked to abide by and help enforce the requirements that are outlined in the TMR Manual to continue to hold in-person meetings. This TMR will remain in effect while the State, country and world remains in the global pandemic.

We are in this together. Let us provide an environment that is as healthy and safe as possible.

Thank you for your help.

Sincerely,

**BNI Atlanta Director Team**

[www.bniatl.com](http://www.bniatl.com)



# BNI<sup>®</sup> MEMBER NOTICE

Please be aware that you are attending this meeting at your own risk. Although certain measures are being taken to reduce exposure, there is no guarantee that you won't contract COVID-19.

## WHAT ARE THE SYMPTOMS OF COVID-19?

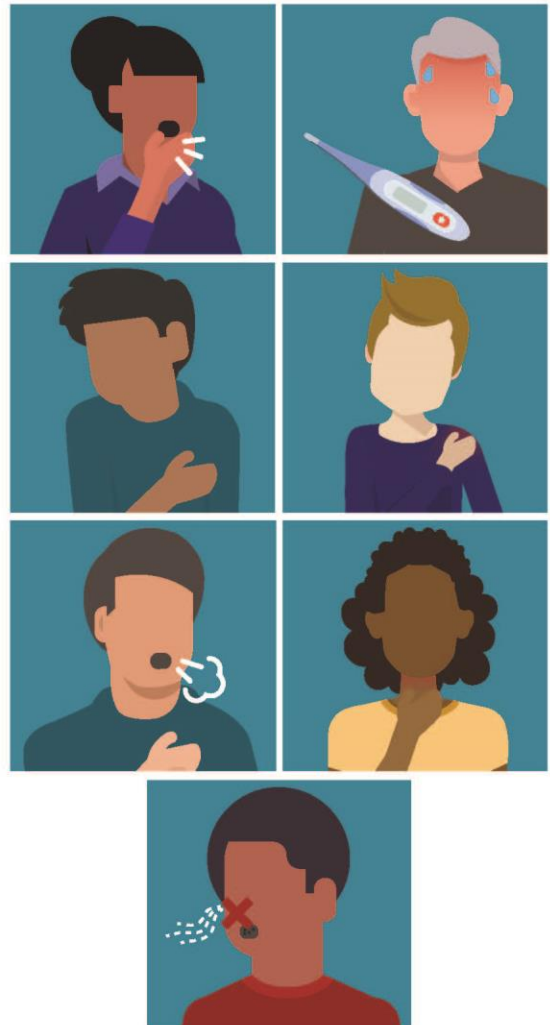
The most common symptoms of COVID-19 are:

**fever**  
**dry cough**  
**tiredness**

Other symptoms that are less common and may affect some patients include:

**aches and pains**  
**nasal congestion**  
**headache**  
**conjunctivitis**  
**sore throat**  
**diarrhea**  
**loss of taste or smell**  
**a rash on skin**  
**discoloration of fingers/toes**

These symptoms are usually mild and begin gradually. Some people become infected but only have very mild symptoms.

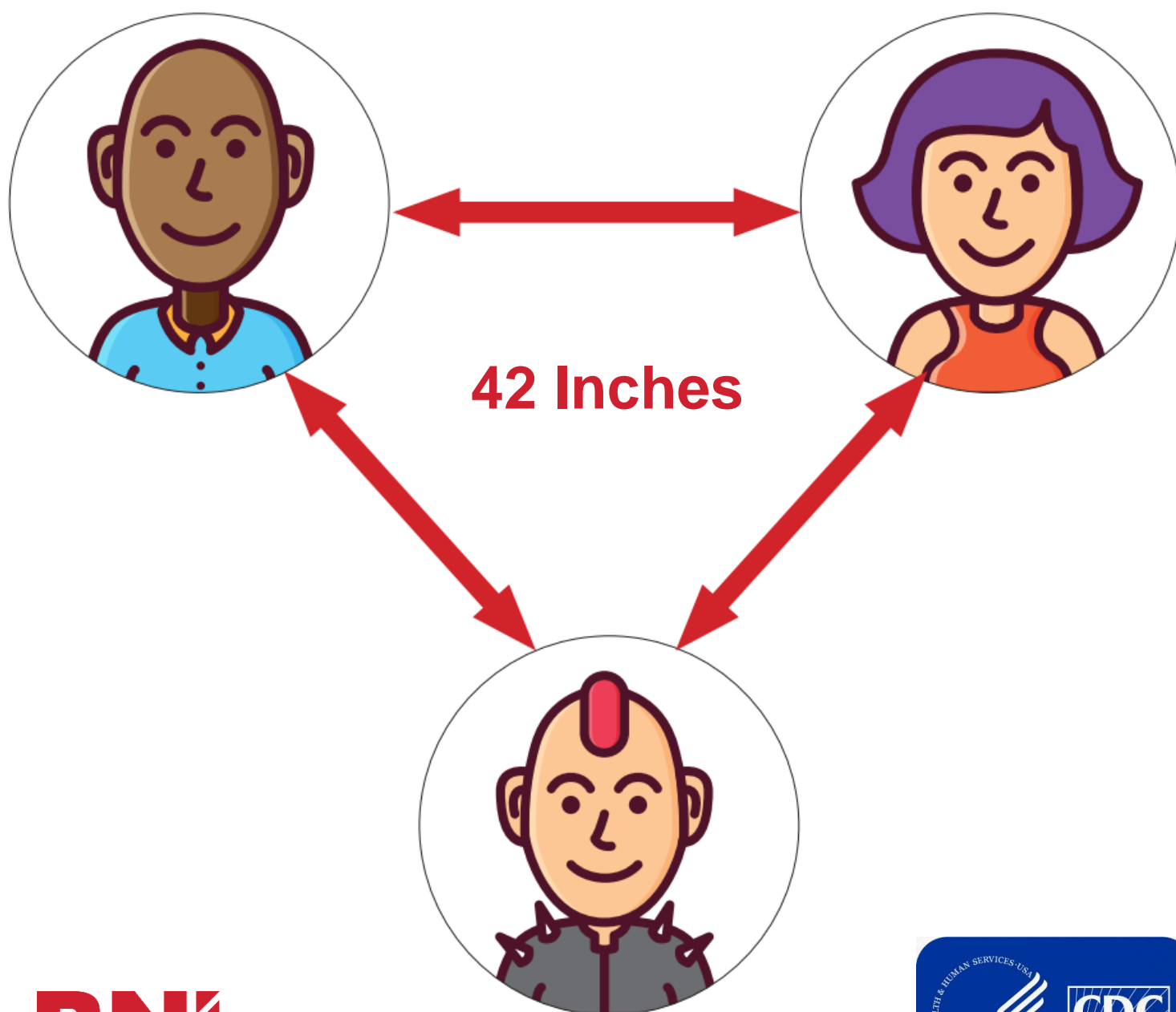


**If you are experiencing any of these symptoms,  
please do not attend this meeting.**

For more information visit the World Health Organization website at [www.who.int](http://www.who.int)

# Social Distancing

Please remain at least  
**3.5 feet** from others



**BNI**



**Thank you for  
wearing a face  
mask.**



# Chapter attendees attend at your own risk.

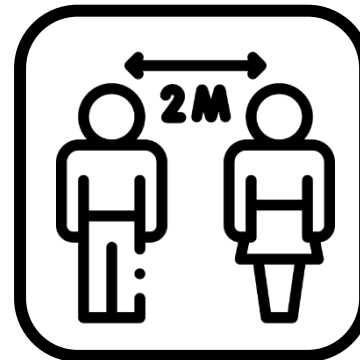
FOLLOW THESE GUIDELINES



**Wear a Mask**



**Wash your  
Hand or Use  
Hand Sanitizer**



**Keep 3.5 Feet  
Apart**



**Prevent Any  
Contact**

# ATTENTION

**ALL ATTENDEES ENTERING  
THIS MEETING ROOM  
MUST SIGN A WAIVER**



**USE THE CAMERA ON YOUR  
PHONE TO SCAN THE QR CODE  
TO COMPLETE AND SUBMIT  
YOUR WAIVER.**

**WE ARE DOING ALL IN ACCORDANCE WITH  
CDC GUIDELINES TO HELP PREVENT THE  
SPREAD OF COVID-19**